

COMETER - THERMOMETERS

-200 TO +1700°C FOR THERMOCOUPLES J, K, S FOR MEASUREMENT AND RECORD



- selection of thermocouple type from the keyboard
- dual line LCD display with special symbols
- adjustable dual level alarm with audio indication for each channel
- memory of minimum and maximum temperatures
- function Hold - manual storing of actual temperature for later displaying
- automatic compensation of cold junction temperature

TECHNICAL PARAMATERS - common:

Operating temperature range:	-10 to +60°C
Connector for probe connection:	subminiature connector for thermocouples
Accuracy without probes thermocouple K (NiCr-Ni):	± (0.4°C + 0.1% from reading) from -200 to +1300°C
Accuracy without probes thermocouple J (Fe-Co):	± (0.4°C + 0.1% from reading) from -200 to +750°C
Accuracy without probes thermocouple S (Pt10%Rh-Pt):	± (0.85°C + 0.1% from reading) from -50 to +1700°C
Resolution thermocouple J,K:	0.1°C from -99.9 do +999.9°C, otherwise 1°C
Resolution thermocouple S:	0.4°C from -50.0 do +999.9°C, otherwise 1°C
Power:	battery 9V, typical life 2 months
Dimensions without probes:	141 x 71 x 27mm

TECHNICAL PARAMATERS - thermometers with record - models D0311, D0321 :

Modes of logging:	<ol style="list-style-type: none"> 1. manual logging - capacity of 1000 stored temperature sets 2. automatic non-cyclic logging (logging stops after filling the memory) - total capacity of 16000 values 3. automatic cyclic logging (logging continues after filling the memory - oldest values are replaced by newest) - total capacity approx. 15200 values (14400 values for D0111)
Real time clock:	year, leap year, month, day, hour, minute, second
PC interface:	serial RS232
Logging interval:	18 adjustable values from 10s to 24hours
Model	Description
C0311	single channel thermometer, no PC interface
D0311	single channel thermometer and datalogger with RS232 serial output
C0321	dual channel thermometer, no PC interface
D0321	dual channel thermometer and datalogger with RS232 serial output

Thermometers are delivered without probes. To order K type probes, please see Optional accessories.

Included accessory:

Traceable calibration certificate from the manufacturer, instruction manual. **Calibration certificate** with declared metrological traceability of etalons is based on requirements of EN ISO/IEC 17025 standard.

- All thermometers are also equipped with connector for external ac/dc adapter.
- Dataloggers D0311, D0321 come complete with a plastic transport case, 9V battery, communication cable for PC and self adhesive Dual Lock for easy mounting.
- Free Windows program is ready to download at www.cometsystem.cz

Optional accessory:

- **MP006** - RS232/USB converter for communication with the PC via USB port
- **SW100** - CD with free PC program
- probes with the "K" thermocouple with subminiature connector are specified at the end of catalog
- **A1515** - adapter 230V-50Hz/12Vdc. 9V battery should be replaced with NiMH accumulator 9V
- **A3400** - NiMH accumulator 9V
- **SWR004** - Optional software for Windows - color printing, vertical and horizontal zoom of graphs and other functions - see also page 23

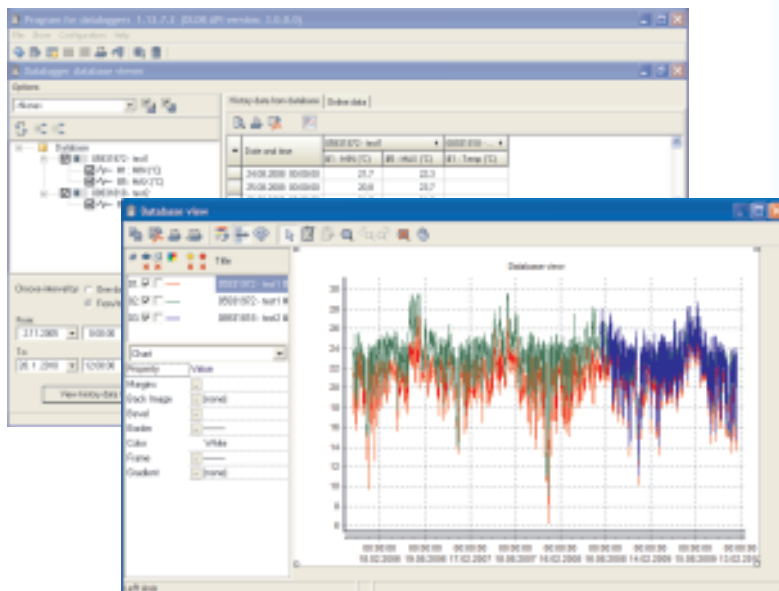
OPTIONAL PROGRAMS FOR DATA LOGGERS

DBL Logger Program

Database program DBL Logger Program for work with data from Comet loggers

Program enables i.a.:

- * To set locally the GSM modem via RS232 link by means of the QMS2901 cable.
- * To view selected channels from any Comet logger together with selected channels of other Comet loggers.
- * Measurement from different Comet devices is possible to combine in one table or graph.
- * To choose any time interval for analysis.
- * Print, export to PDF - table and graph.



Other freeware needed for system operation:
- database server Microsoft SQL or MySQL

SWR004 Program for Data Loggers Sxxxx, Rxxxx, Gxxxx, Dxxxx.

Program is designed for communication with data loggers, read out the configuration of the device and setting up the parameters. It also allows to read out the data from the device in order to get the measured values. For the temperature and humidity devices is possible to select one counted value (dew point temperature, absolute humidity, specific humidity, mixing ratio, specific enthalpy). Data can be viewed and printed as table or graph. It is also possible to export data to DBF or TXT files. You can change the axis and select any time range to view or print out the data. It is allowed to zoom the graph, modify the drawing width and the its color. It is also possible to separate the quantities from each other and print some of them or all of them separately.

The main advantages of optional software comparing to the freeware:

- * different graphical engine (zoom, selection of the curves, axis modification)
- * selection of the values from table to print them out
- * communication with more LAN adapters (freeware supports only one)
- * statistic values, counting of MKT (Mean Kinetic Temperature)
- * online visualization of actual values
- * communication via GSM modem (dialling) or GPRS (data)
- * autodownload from more data loggers
- * automatic export to DBF or TXT after data download
- * selectable path to store data

